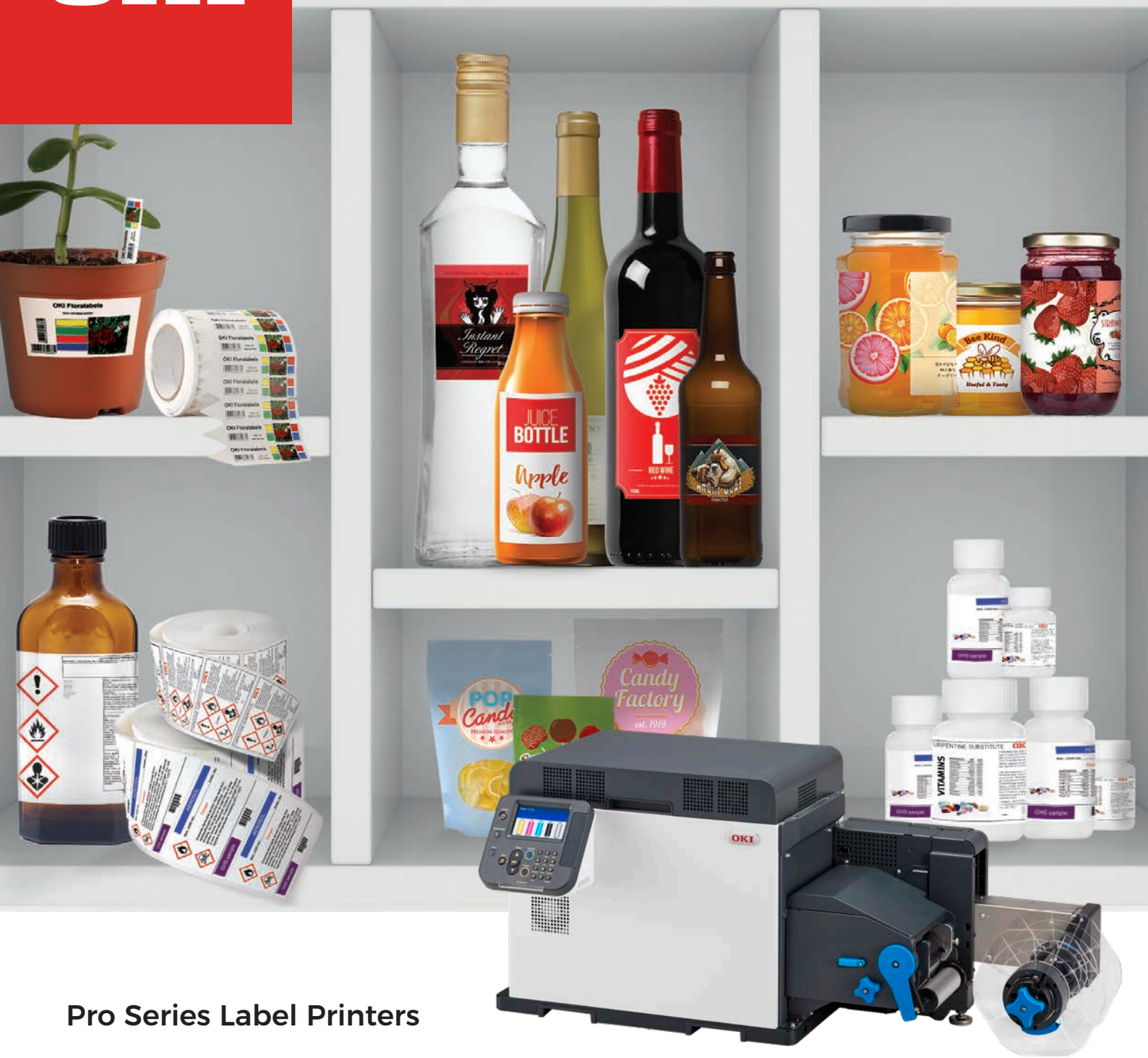


# OKI



## Pro Series Label Printers

A new era in flexible label printing - making great ideas stick!

**BUILT TO PERFORM.**  
**BUILT TO CREATE.**



# MAKE AN IMPACT

Packed with the latest in OKI digital LED technology, the Pro Series Label Printers take creativity and flexibility to a new level, with professional four colour (Pro1040) and five colour (Pro1050) narrow-format printing for a variety of applications.

## Unrivalled Media Handling

Built to serve a wide range of print requirements, the Pro Series Label Printers deliver the best results every time. A true breakthrough in printing technology for the label industry, the Pro Series has unrivalled media handling capability. **Printing on a wider range of media is now much easier with OKI's label printers, and can include uncoated, glossy and textured papers, as well as synthetics with a wide range of substrates which can be clear, opaque, metallised, white or coloured.** The Pro Series opens the door to a range of label media that inkjet label printers simply cannot handle, enabling businesses to say "yes" to new creative ideas and complex print jobs.

## Stand out from the crowd with vibrant, high quality eye-catching labels

Every label has value and can make or break a product. A good label can capture the unique characteristics of the content, grab the attention of a passing shopper and ultimately sell a product and drive repeat purchases. With the same High Definition Colour printing and digital LED technology as OKI's Graphic Arts Printers, the Pro Series Label Printer brings creative printing to life with vibrant colours and high quality output at 1200 dpi.



## CREATE A LASTING IMPRESSION BEYOND THE LABEL

**No need to be restricted by quantity.  
No more waste!**

Ideally suited to brand owners and print houses, the Pro Series is designed to print any quantity from a single label to many thousands, reducing wastage and enabling you to print what you need, when you need it.

## Easy installation and minimal training

Rather than wasting valuable time and budget juggling different tasks, the Pro Series is straightforward to install and requires minimal training. Perfect for on-demand printing, rolls of different media types including paper and synthetics can quickly be exchanged, and consumables have a high capacity and are easily changed. Labels can be print and cut, produced using a roll-to-roll option and full-bleed labels can be printed using a matrix removal option.

## Print in WHITE - Enjoy greater flexibility in the design of printed labels

Producing labels with a white typeface on a clear or coloured background is unique for a printer of this size. Labels that are difficult to print using other digital technologies are handled with ease. Using white as a fifth colour (in the Pro1050) allows much more flexibility when designing your labels. The white can be used as a background on transparent substrates, ideal for promotional and security labels placed on glass or it can be used to create new exceptional designs on coloured or metallised substrates. Whatever your application, you can be sure your messages come across loud and clear.



# PRINTED LABELS AS AN ON-DEMAND SERVICE

With high-value heavy duty machines simply not geared up for small or speciality narrow-format label print jobs, many label resellers, print shops and print houses are currently forced to turn down customers with small label printing requirements.

Rather than disappointing valuable customers and seeing profit go to competitors, the Pro Series Label Printers plug this gap.

For high street print shops and small print houses, this provides the ability to launch new on-demand short-run colour label printing services. Open the door to a lucrative new revenue stream and customer base, by offering personalised and highly individual labels.

Remove any proofing delays and print immediately from your design application, producing the exact quantity of labels you need.

## Applications include:

- |                   |                |
|-------------------|----------------|
| Branding          | Food           |
| Fridge            | Cosmetic       |
| Stickers          | Horticulture   |
| Swing Tags        | Asset Tracking |
| Chemical          | Electrical     |
| Wine and beverage | Outdoor        |
| Pharmaceutical    | AND MORE...    |



## Create labels for a wide range of applications

For brand identity for food, beverages and household goods, the Pro Series can be used across a range of narrow-format label types, bringing the best results for all kinds of printed label. Outdoor use labels, freezer and cold-storage labels, or labels for standard store cupboard products, the Pro Series can deliver them all. It can easily handle short-run label demands across a range of media types, unlocking a choice of options on coloured labels and formats.



## Key benefits:

- fast turnaround
- easy to set-up and use
- wide range of applications
- unique print output
- no minimum quantity to justify set-up costs



# SPECIALTY APPLICATIONS

Thanks to the media versatility and unique properties of dry toner, you have the ability to service specialty applications with OKI's Pro Series Label Printers.

## Robust waterproof printing for industrial and outdoor labelling

Containing crucial safety information and other essential warnings, industrial chemical labels are subject to stringent standards and mandatory controls. Using the synthetic 'Teslin' material, the Pro Series Label Printers can be used to produce multiple-colour narrow-format waterproof labels that have been tested to survive underwater for up to three months without the label or printed matter coming away or significantly disintegrating. This waterproof printing capability lends itself to industries such as horticulture, where plant and tree labels must withstand wet conditions and be resistant to UV fading for up to one year, without affecting the material construction of the label. Label stock can be clear or opaque, utilising the 5th colour to enhance the label design.



## Print labels with instant tamper-indicating properties

Special label stock is available which has instant tamper-indicating properties. This reveals a 'VOID' message upon label removal. Typical applications include automotive and electronic component labelling, security seals, warranty and asset tracking identification. Labels with special adhesives which are very difficult to peel off can be printed using the Pro Series.



## Long term adhesion and clean removability

Labels which inform consumers of product energy ratings and advice are increasingly used in consumer electronics. House hold electrical products require labels with long term adhesion and clean removability. OKI's Pro Series Label Printers can be used to print these label stocks, without affecting the material construction of the label. Label stock can be clear or opaque, utilising the 5th colour to enhance the label design.



# OPEN THE DOOR TO A LUCRATIVE NEW REVENUE STREAM AND CUSTOMER BASE.

OKI's Pro Series Label Printers make launching new on-demand, short-run, colour label printing services a commercial reality. It is quick to configure and cost effective to manage, even on very small print runs. And with flexible media options, it opens the door to countless revenue opportunities.

## Printer & Unwinder

**Pro1040 (CMYK)** Four colour label printer

**Pro1050 (CMYKW)** Five colour label printer

Printer supplied with the unwinder.



## Ordering

Printer	OKI Part Number
Pro1040 (4 colour) printer & unwinder	46672003
Pro1050 (5 colour) printer & unwinder	46672103
Consumables	
Toner & drum (Yellow)	46844011
Toner & drum (Magenta)	46844012
Toner & drum (Cyan)	46844013
Toner & drum (Black)	46844014
Toner & drum (White)	46844015
Fuser with exit unit	46672506
Belt unit	46672305
Waste toner box	46672402

## Business Printing Specialists

OKI's printer division is a global business-to-business brand dedicated to creating cost effective, professional in-house printing solutions which are designed to increase the efficiency of today's and tomorrow's businesses and their workflows. As pioneers in innovative print technologies from digital LED to High Definition Colour, we have a portfolio of award winning products and solutions enabling businesses to achieve both image focused, vibrant, quality print communications and budget flexibility.

OKI presents a full range of A3 and A4 colour and mono printers and MFPs, for workgroups and businesses of all sizes with superior media-handling capabilities. In addition our fax, POS and dot matrix printers complete our range of print solutions. These best in class products are designed to be easy to use making the job of in-house print easier.

## Considering the Environment



As part of the OKI Group's Charter of Corporate Conduct, OKI continually reviews its efforts to provide environmentally sound solutions to its customers:

- Our products are designed and manufactured with reducing the impact on the environment in mind.
- Increasing the amount of our hardware products and consumables that are recycled is one of our strategic objectives.
- We feel responsible for conducting our business in an environmentally sound manner, contributing to conservation and activities within our local communities.

OKI's Green Leaf symbol, found on all products and packaging, represents our total commitment to collection, recycling and environmental processes.

## High Definition Colour



High Definition Colour is OKI's own unique set of market defining hardware and software technologies. Together, these components deliver unsurpassed colour printing simply, intelligently, and with perfect results.

## Great colour starts with OKI

## 20 years of LED Technology



OKI pioneered the development of digital LED technology in printers over 20 years ago. This innovation delivers High Definition printing – for more accurate, striking printed documents. Thanks to this digital LED technology, our printers are compact, environmentally friendly and energy efficient, using significantly less raw materials in the manufacturing process and consuming less energy. LED print heads have no moving parts, making our LED printers robust and ultra reliable.

# OKI

## OKI Data Australia Pty. Ltd.

Level 1, 67 Epping Road  
Macquarie Park, NSW 2113  
Australia  
T 1800 800 140

## OKI Data New Zealand

F2 3 Orbit Drive  
Auckland 0632  
New Zealand  
T 0800 654 669

Connect with OKI



[www.oki.com/au](http://www.oki.com/au)